

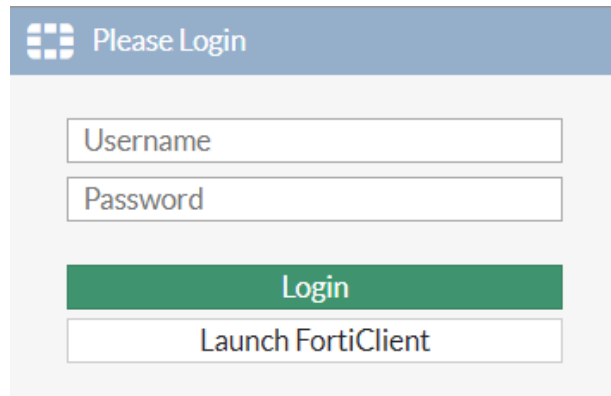
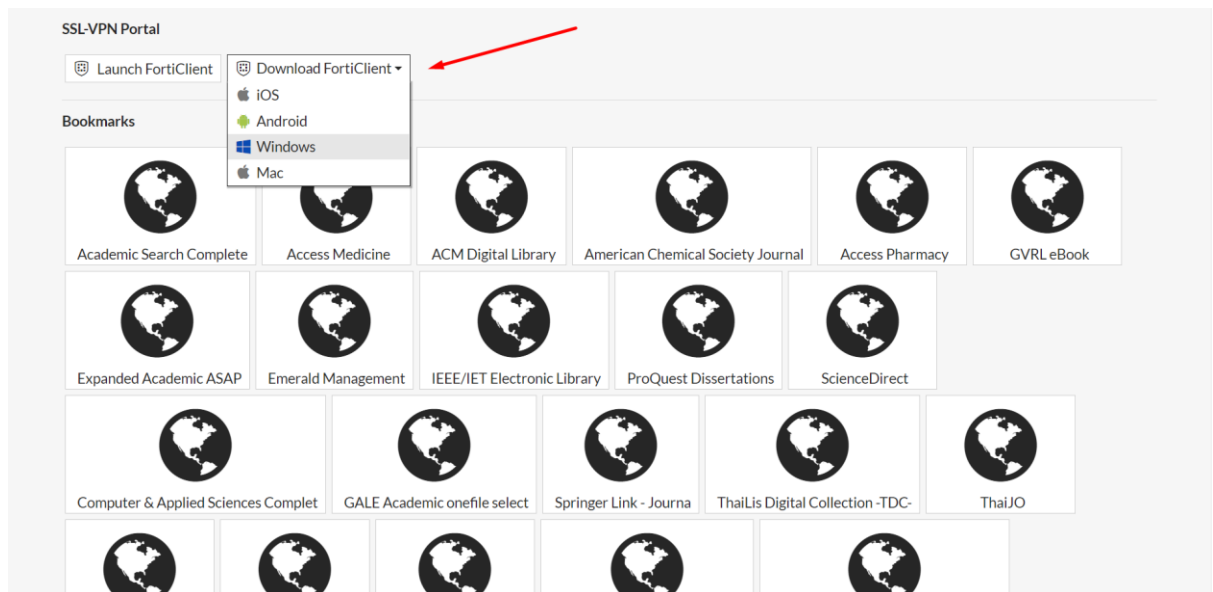


คู่มือการติดตั้งและการเชื่อมต่อ FortiClient VPNWEB

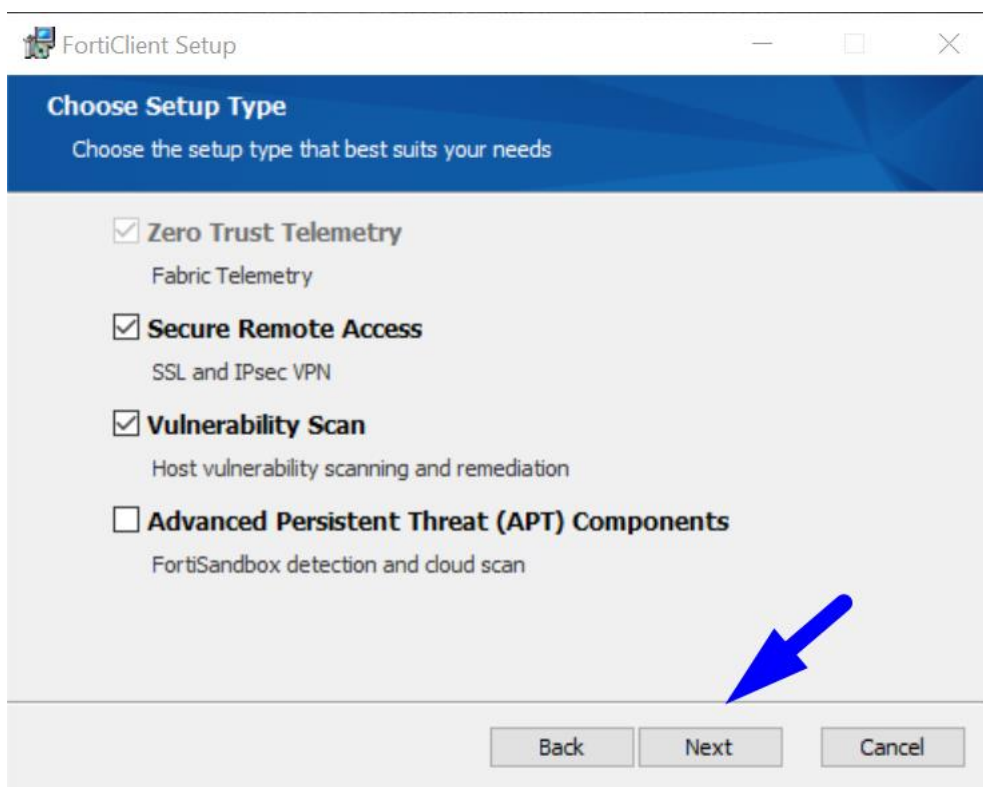
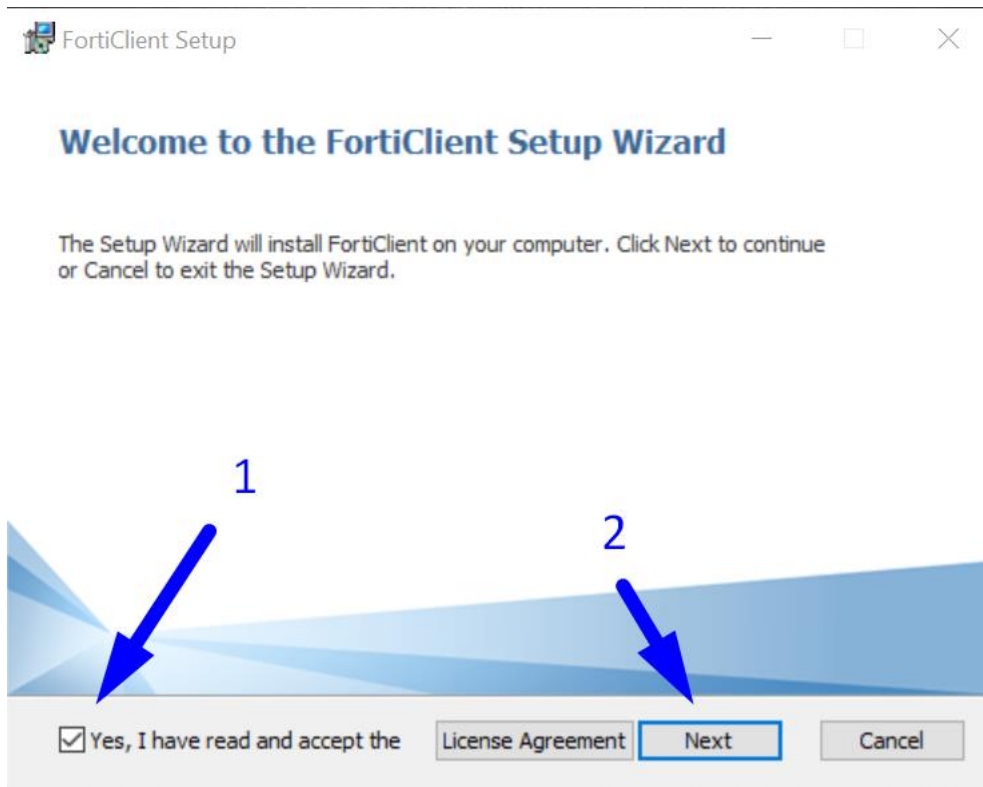
1. เข้า URL : <https://vpnweb.up.ac.th> ผ่าน Web browser  Google Chrome  Firefox
2. กรอก Username และ Password เพื่อทำการ login

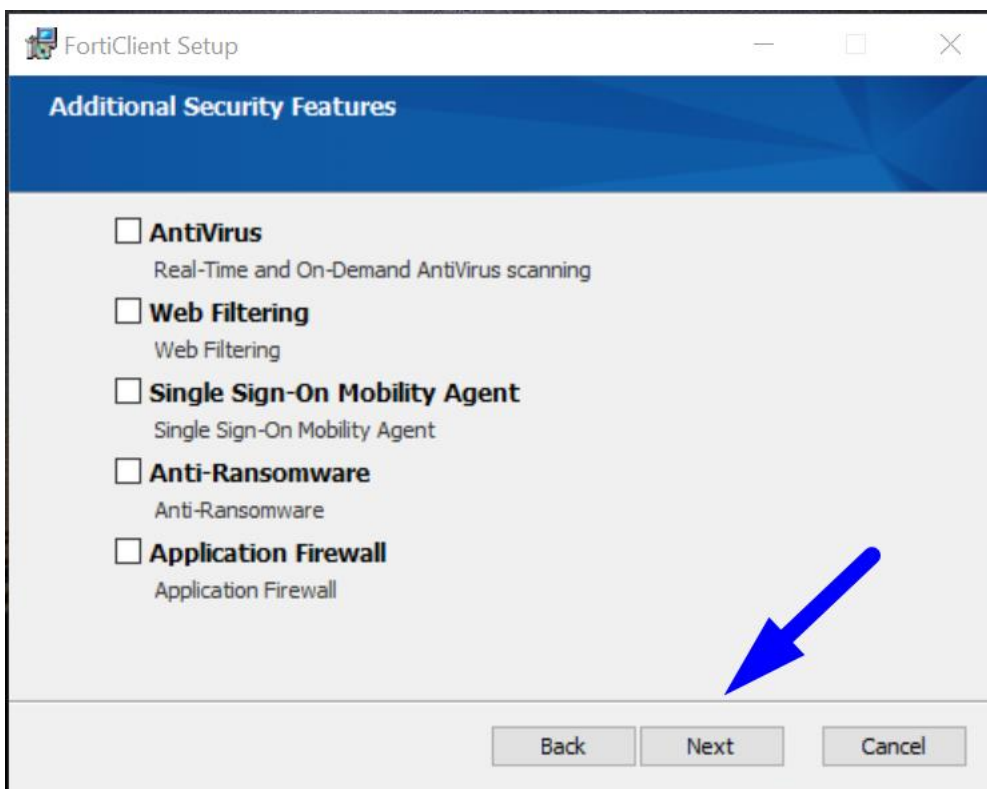
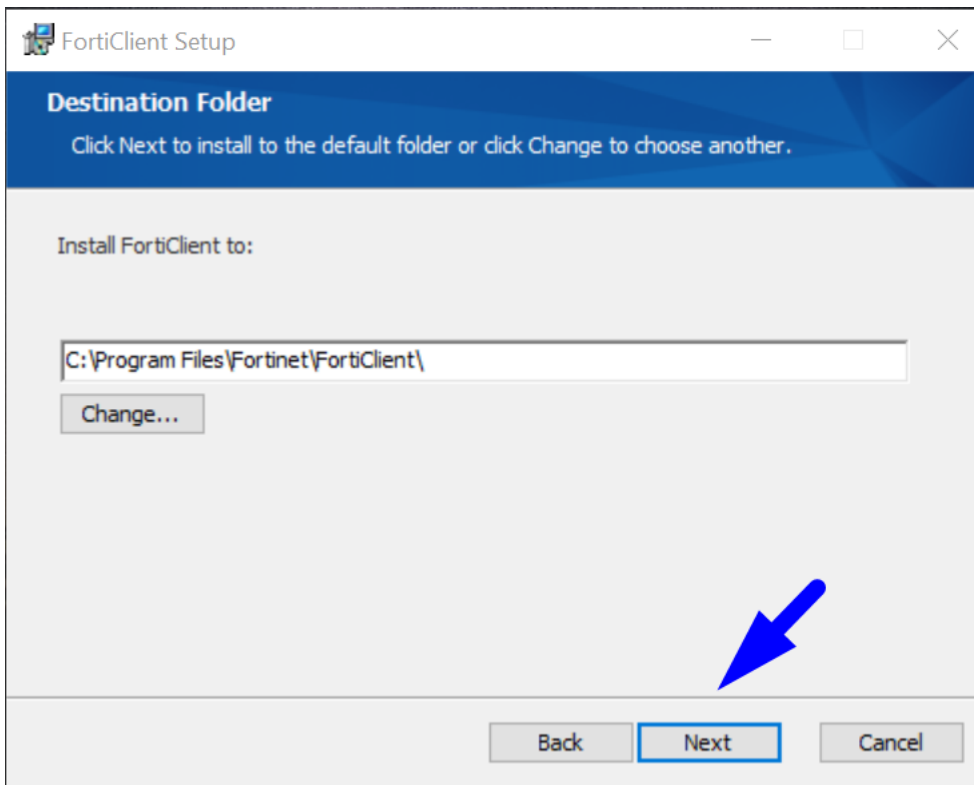


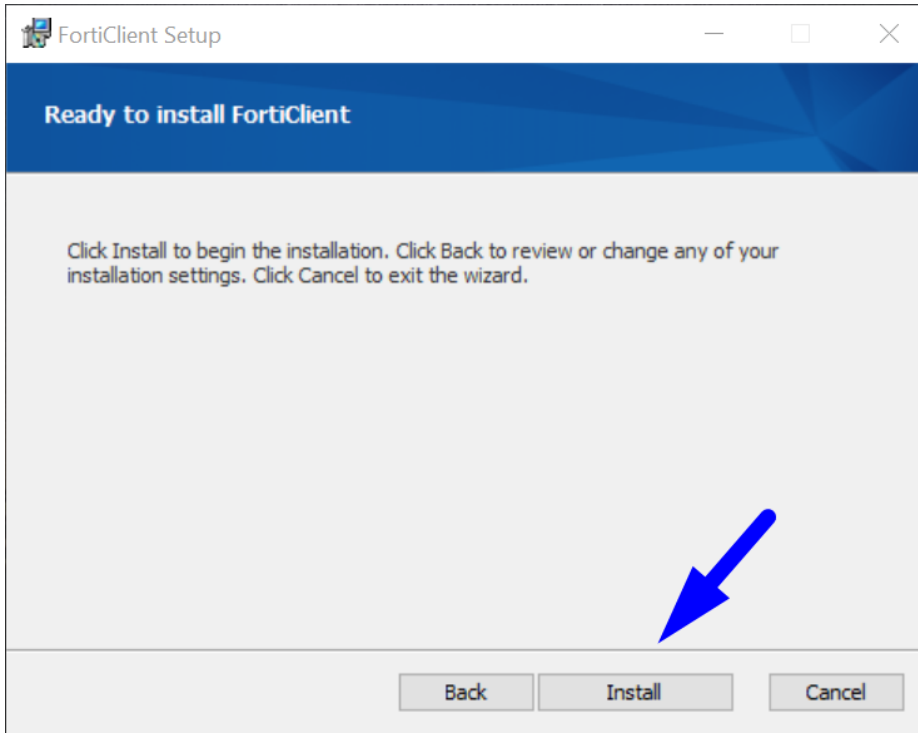
3. เลือก Download FortiClient ตามระบบปฏิบัติการของเครื่องที่เราใช้งานอยู่



4. ทำการติดตั้ง(Install) ที่Download มาจาก Websiteในขั้นตอนก่อนหน้านี้

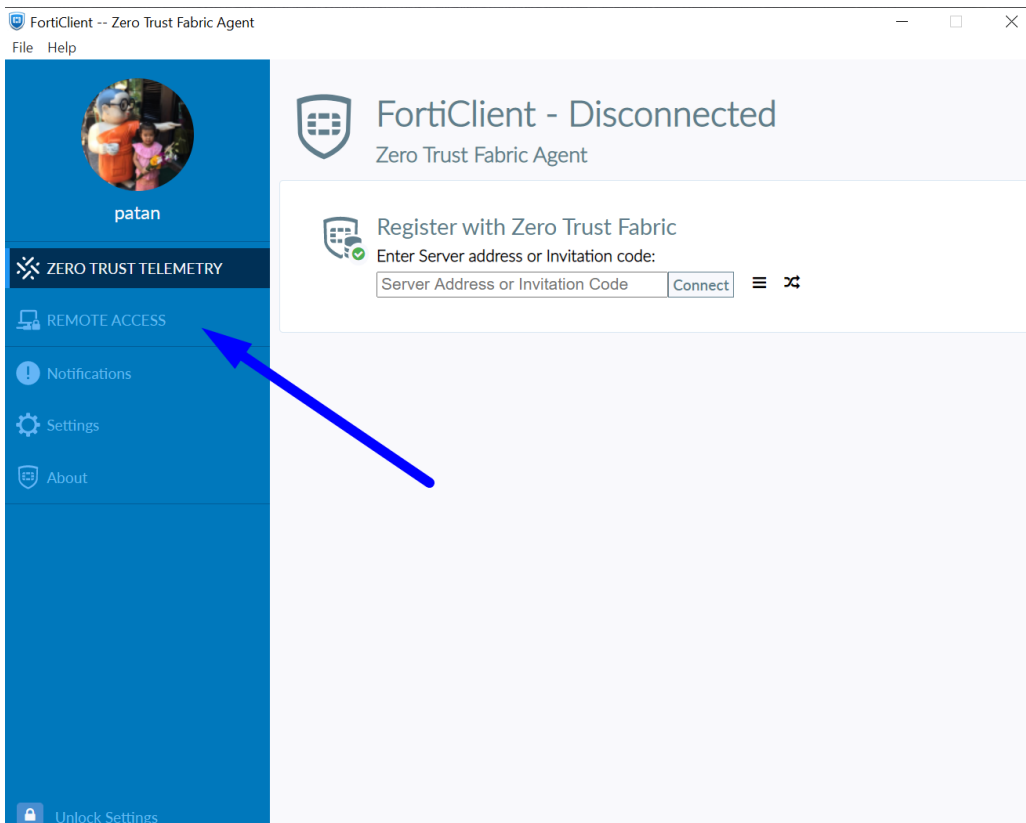






หลังจากติดตั้งโปรแกรมเสร็จสิ้นให้ทำการ restart computer

5. หลังจาก Install FortiClient เสร็จเรียบร้อย ให้เปิดโปรแกรม FortiClient  จากหน้า Desktop



6. Remote Gateway : **vpnweb.up.ac.th**

FortiClient -- Zero Trust Fabric Agent

File Help

patan

ZERO TRUST TELEMETRY

REMOTE ACCESS

Notifications

Settings

About

Unlock Settings

New VPN Connection

VPN **SSL-VPN** IPsec VPN XML

Connection Name VPNWEB

Description

Remote Gateway **vpnweb.up.ac.th** ✕
+Add Remote Gateway

Customize port 443


Enable Single Sign On (SSO) for VPN Tunnel

Client Certificate None

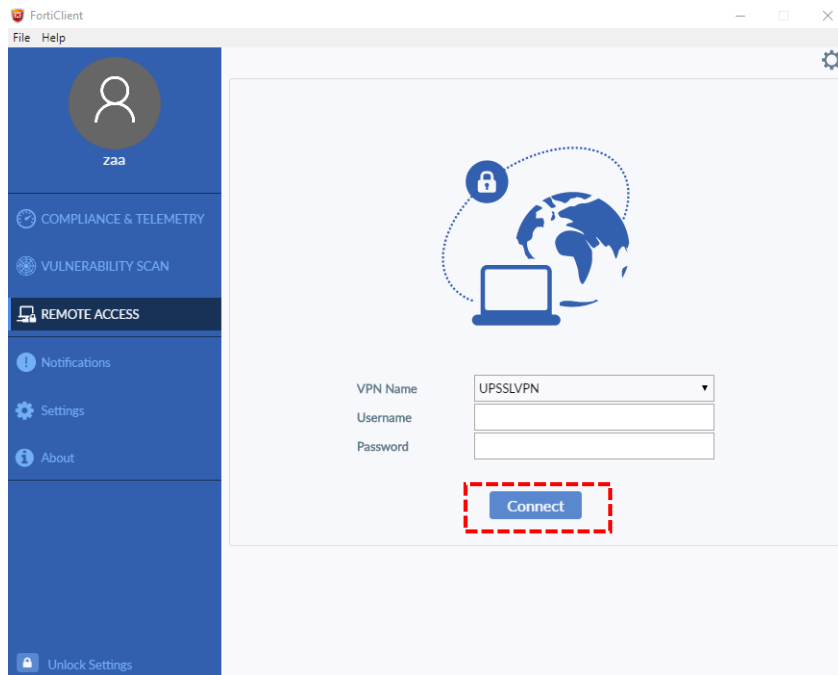
Authentication Prompt on login Save login

Enable Dual-stack IPv4/IPv6 address

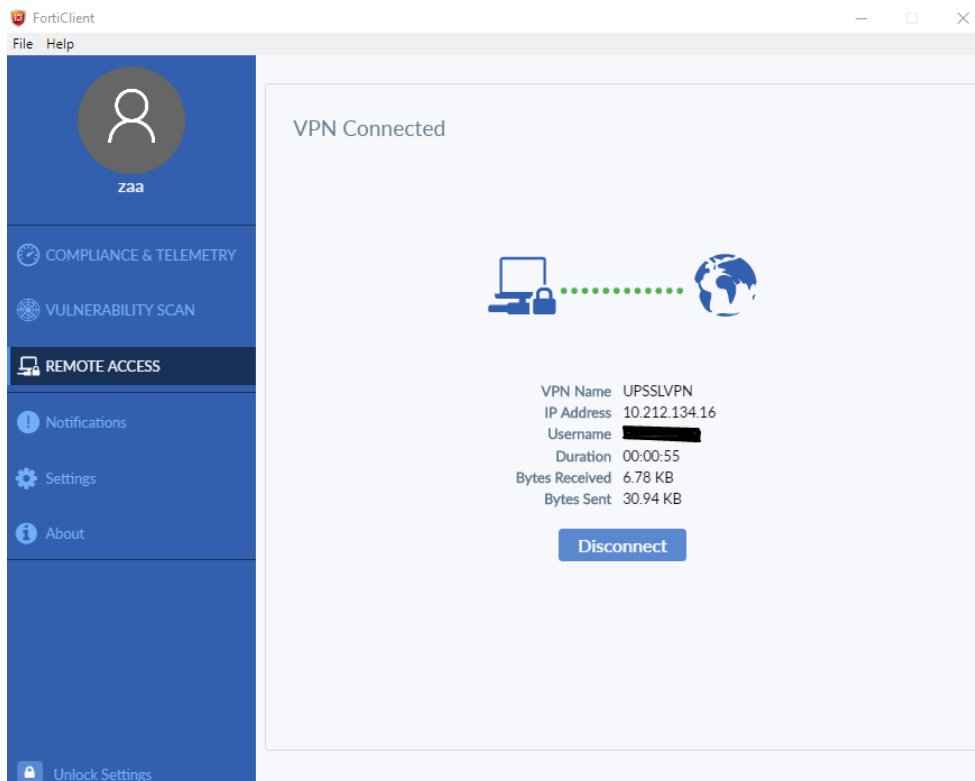
Cancel Save



7. ทำการกรอก Username และ Password แล้วกดปุ่ม Connect



8. ถ้า Connect VPN สำเร็จ จะปรากฏเหมือนดังภาพข้างล่าง



หลังจาก connect vpn แล้วเปิดใช้ web browser เข้า web site ที่ต้องการได้ครับ

The screenshot shows the Web of Science website interface. At the top, there is a navigation bar with the Clarivate logo, language selection (English), and a Products menu. Below this is a secondary navigation bar with 'Web of Science' and links for Search, Marked List, History, and Alerts. A 'Sign In' link and a 'Register' button are also present.

The main content area features a large purple banner with the text: "Discover multidisciplinary content from the world's most trusted global citation database." Below the banner is a search interface with a dropdown menu set to "Web of Science Core Collection" and "Editions: All". There are three tabs: "DOCUMENTS" (selected), "AUTHORS", and "CITED REFERENCES". A search input field contains the text "Example: liver disease india singh". Below the input field are two buttons: "+ Add row" and "+ Add date range". To the right of these buttons is the text "Advanced Search". At the bottom of the search area are two buttons: "X Clear" and "Search".

At the bottom of the page, there is a footer with the following text: "Welcome University of Phayao (ThailLIS Project) Support by UniNet, Commission on Higher Education". To the right of this text is the Clarivate logo. Below the footer is a dark bar containing the Clarivate logo, the tagline "Accelerating innovation", and several links: "© 2021 Clarivate", "Training Portal", "Product Support", "Data Correction", "Privacy Statement", "Newsletter", "Copyright Notice", "Cookie Policy", "Terms of Use", and "Follow Us" with social media icons for Twitter and Facebook.